

# Technical Rider Shake Shake Shake

Version: 18 October 2019

Producer: De Dansers  
Biltstraat 166  
3572 BP Utrecht  
Phone: +31-307512558  
Email: [info@dedansers.com](mailto:info@dedansers.com)  
Website: [www.dedansers.com](http://www.dedansers.com)

Choreography: Josephine van Rheenen  
Concept: Guy Corneille and Josephine van Rheenen  
Created with and performed by: Ruben van Asselt, Guy Corneille, Yoko Ono Haveman, Marie Khatib-Shahidi, Wannes De Porre, Hans Vermunt  
Scenography: Kris van Oudenhove, Roos Matla  
Dramaturge: Leo Spreksel, Moniek Merx  
Light design: Kris Van Oudenhove  
Technique: Chieljan van der Hoek  
Production management: Danae Bos  
Business organisation: Miriam Gilissen

## Contact information

Production: Danae Bos  
[danae@dedansers.com](mailto:danae@dedansers.com)  
+31 (0)6 13417052  
Technician: Chieljan van der Hoek  
[vanderhoek.chieljan@gmail.com](mailto:vanderhoek.chieljan@gmail.com)  
+31 (0)6 11300755

## Times

Duration performance: +/- 60 minutes  
Setting up stage design: About 1 hour  
Preparation time (lights and spacing): About 4 hours  
Sound check: About 1 hour  
De-construction time: About 1 hour

Arrival Technician and production (2): to be defined +/- 6 hours before show  
Arrival Musicians (3): to be defined +/- 3 hours before show  
Arrival Dancers (3): to be defined +/- 3 hours before show

## Staff

Technicians De Dansers:	1
Technicians theatre construction	2
Technicians theatre performance	1

## Facilities

Dressing-rooms: One for 6 performers with warm showers, fruit and water.  
Parking: One parking spot for van (6 meters, 2,75m high) at venue

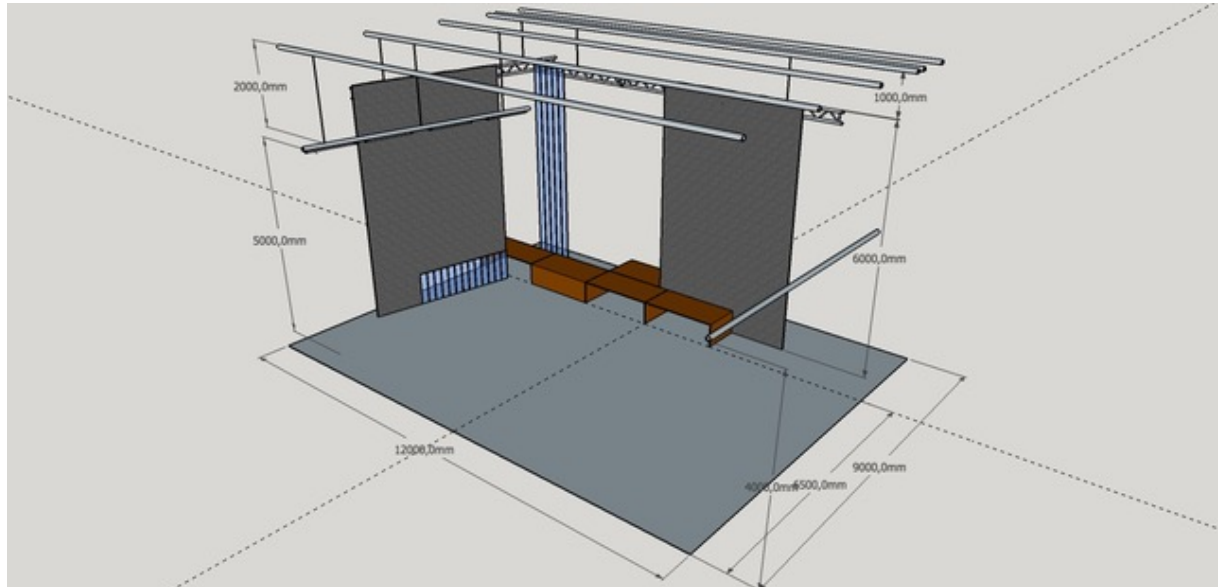
## Stage

Floor: Preferably a springy wooden floor with black dance floor.  
Horizon: **Consult together** about use of masking – often preferably no masking or horizon.

Size: ideal size 12 m wide x 10 m deep x 6 m high  
if stage is smaller, contact production office.

### Scenario

*See attachments with 3D drawings from different perspectives for a detailed view.*



Six portable staging platforms (aluminum and wood)/runway

We have one curtain on truss (we bring our own), one curtain we could tie to (for example) movable truss at theatre.

A scaffolding pole with 4 fluorescent beams (tl-balken) is part of the design.

Full band set-up with drum, keys, guitar and vocals.

No Rigging, Fire or Special Effects.

SMOKE: we use a smoke machine at the start of the performance.

### Audience

Max. number of visitors - depending on the viewing lines: 400

Special cases, consult together.

### Lights

*See light plot – further down in this document.*

We would like to use the lights of the theatre – and will bring a laptop for mixing.

We will bring one light ladder/ light stand.

### Sound

We would like to use 4 monitors (we can bring three active speakers of requested), 2 di's and PA of the theatre. We will use our own Allen & Heath qu24 sound mixer.

We will bring all instruments (and guitar amp) and most of our microphones with us. If there is a large diaphragm (for example AKG 414) available we would gladly use this.

We use wireless microphones for vocals, guitar and saxophone.

*For the audio set-up and mic's see page with patch list.*

## **PRIE/ Performance Risk Assessment**

Shake Shake Shake, De Dansers

4 October 2019

Choreography: Josephine van Rheenen | Production management: Danae Bos

### **STAGE DESIGN**

The portable stage platforms are safe to walk over and dance upon. The construction is solid and the objects will not move unintentionally. The platforms that will stay lined up during the performance will be kept together with quick grip clamps for extra stability.

Instruments: there will be (a limited amount of) wires on the floor, but the dancers have a very good awareness of their surrounding and practiced and performed often with instruments (and wires) on stage.

### **DRAPE**

The curtain/ drape that is part of our stage design is treated with fire retardant fluid, plus part of the curtain is made of wool and isn't flammable.

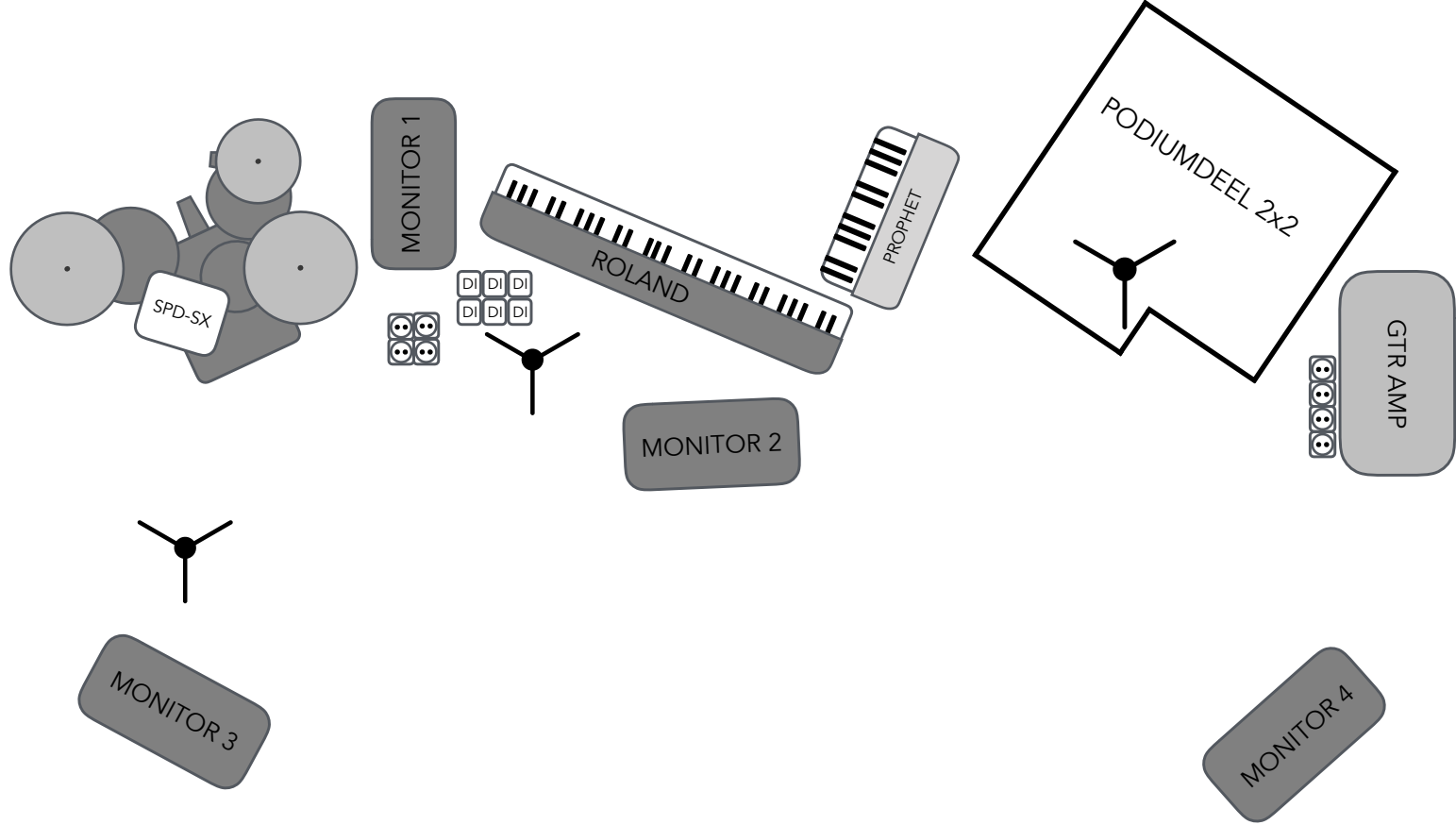
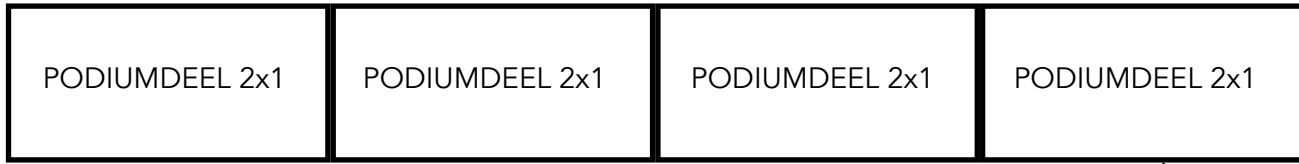
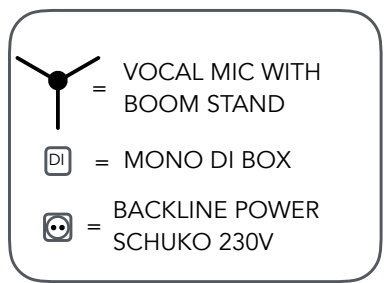
### **SOUND**

There is loud music, but not too loud – because dancing with earplugs is very complicated. The dancers influence the loudness of the music on stage. Our technician keeps the volume at a reasonable level for the audience. For younger audiences we could hand out precautionary earplugs.

### **SPECIAL EFFECTS**

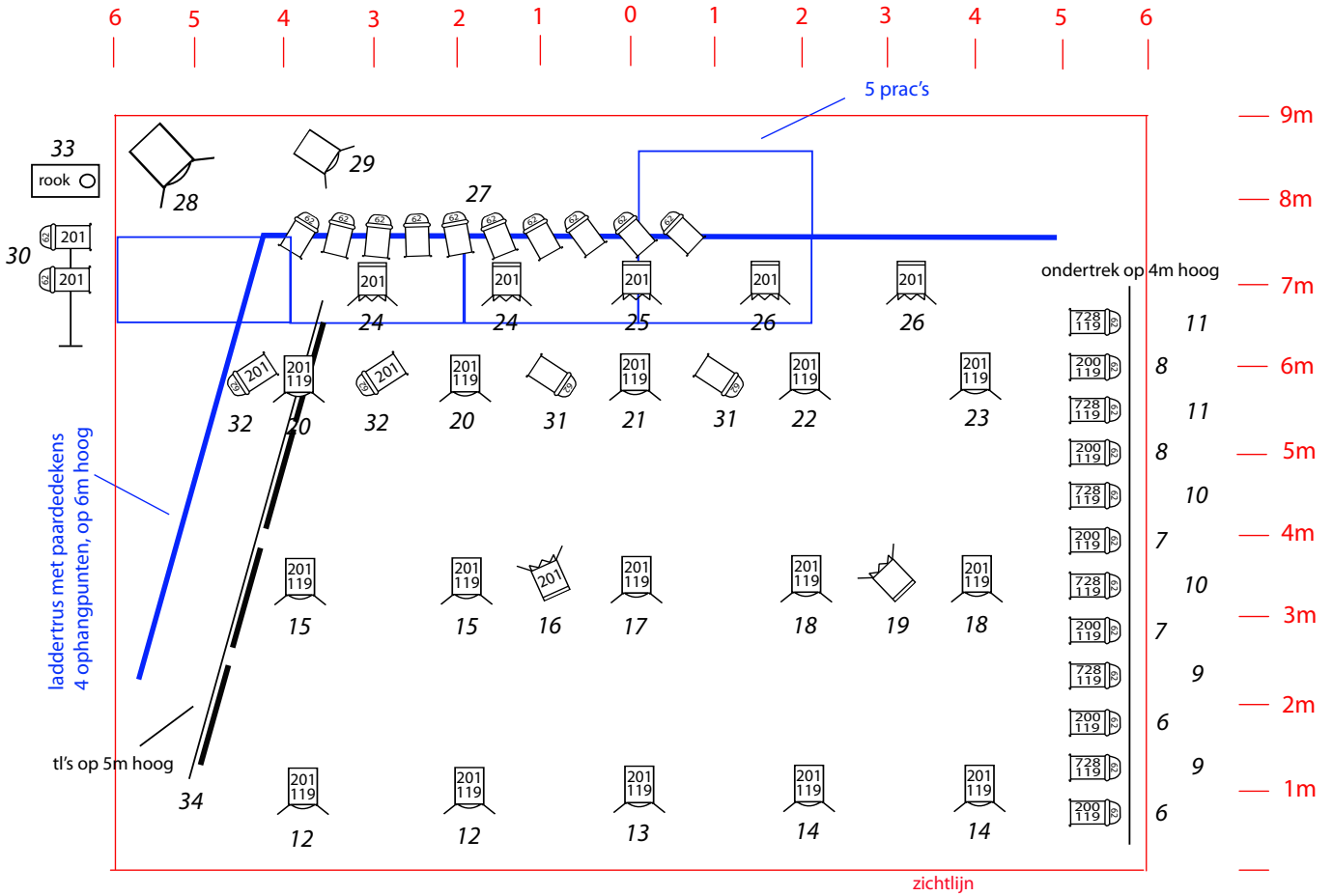
Smoke. At the start of the performance we use a smoke machine to enhance the effect of the lights. The smoke will never reach a level of denseness that impairs the vision of the performers on stage.

No fire, explosives, unexpected loud noises, confetti, laser or strobe lights are used during the performance.





**PATCHLIST + MICROPHONES**


1	KICK (SHURE B52) (OWN)	13	PROPHET LOW (DI)
2	SNARE TOP (SHURE SM57) (OWN)	14	PROPHET HIGH (DI)
3	SNARE BOTTOM (SHURE E604) (OWN)	15	GTR (SHURE SM57) (OWN)
4	HIHAT (RODE NT5) (OWN)	16	SAXOPHONE (SHURE BLX4) (OWN)
5	RACK TOM (SENNHEISER E604) (OWN)	17	VOCAL 1 (SHURE SM58 WIRELESS 2,4Ghz) (OWN)
6	FLOOR TOM (SENNHEISER E904) (OWN)	18	VOCAL 2 (SHURE SM58 WIRELESS 2,4Ghz) (OWN)
7	OVERHEAD LEFT (NEUMANN KM182)	19	VOCAL 3 ((SHURE SM58 WIRELESS 2,4Ghz) (OWN)
8	OVERHEAD RIGHT (NEUMANN KM182)	20	SPARE MIC STAGE RIGHT WIRED
9	SPD MONO (DI) (OWN)		
10	X		
11	ROLAND LEFT		
12	ROLAND RIGHT		





### LICHTPLAN *SHAKE SHAKE SHAKE* van Stichting De Dansers

 profiel 1KW  
6 X

 pc 1KW  
16 X

 fresnell 1KW  
7 X

 pc 2KW  
1 X

 par 62-medium  
28 X

filters : 200 / 201 / frost 119  
aantal dimmers 2KW : 36

van Stichting De Dansers :  
4 x t'l's met los dmx-dimmertje en pijp 6m  
lichtladder  
rookmachine dmx  
filter 728  
lichtsturing Chamsys/laptop

lichtontwerp Kris Van Oudenhove